

Rain shower with wall fixing 220 mm - Chrome



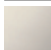










TARA

28 649 970




Fits: TARA, LISSÉ, VAIA, META

- 450mm projection
- PURE RAIN, max. flow rate 6.8 l/min (at 3 bar)
- Function from: 6 l/min
- with anti-scale system
- rain shower Ø 220 mm
- rosette Ø 60 mm
- 1/2" connection
- quick clearing
- This product reduces water consumption by % (compared to requirements of EPAAct '92)
- This product can contribute to Water Use Reduction in LEED® Green Building Rating
- This product can help a building meet the requirements of Green Building Rating Systems, e.g. LEED®, BREEAM®, DGNB

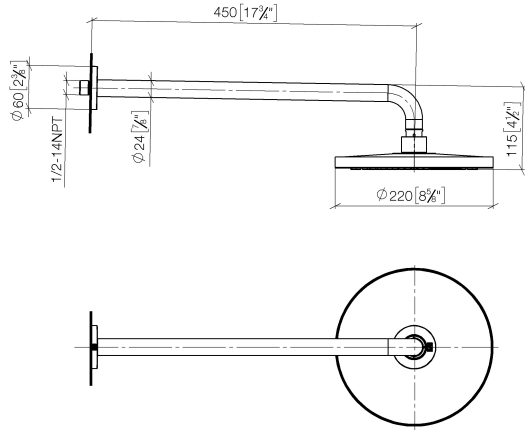
| | | |
|---|-------------------------------|--------------------|
|  | Chrome | 28 649 970-00 0010 |
|  | Brushed Platinum | 28 649 970-06 0010 |
|  | Platinum | 28 649 970-08 0010 |
|  | Dark Chrome | 28 649 970-19 0010 |
|  | Light Gold | 28 649 970-26 0010 |
|  | Brushed Light Gold | 28 649 970-27 0010 |
|  | Brushed Durabrass (23kt Gold) | 28 649 970-28 0010 |
|  | Matte Black | 28 649 970-33 0010 |
|  | Brushed Bronze | 28 649 970-42 0010 |
|  | Brushed Champagne (22kt Gold) | 28 649 970-46 0010 |
|  | Champagne (22kt Gold) | 28 649 970-47 0010 |
|  | Brushed Chrome | 28 649 970-93 0010 |
|  | Brushed Dark Platinum | 28 649 970-99 0010 |

Required miscellaneous

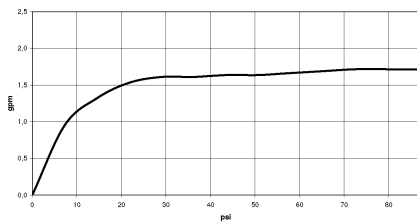
| | | |
|---|--|-----------------------|
|  | Concealed wall elbow - •max. recess depth 163 mm •min. recess depth 90 mm | 35 085 970-90 0010 |
|---|--|-----------------------|

28 649 970

mm [inches]



Flow rate chart



Codes & Standards

ASME
A112.18.1/CSA
B125.1

California Energy
Commission
(CEC)

Water Sense





Rain shower with wall fixing 220 mm - Chrome

TARA

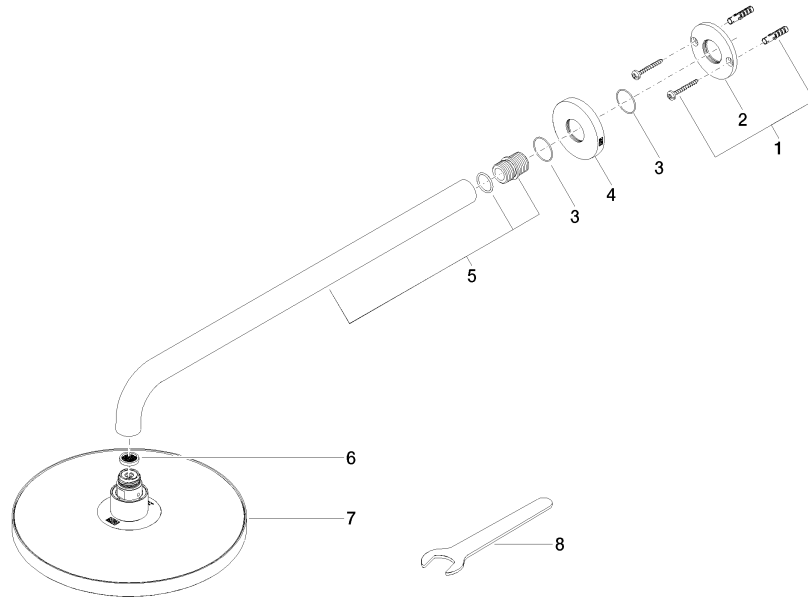
28 649 970

Certificates

IAPMO_11777.

IAPMO_4976 (4).

28 649 970



Spare parts list

| No. | Item Number | Name | Quantity used | Delivery time |
|-----|--------------------|------------|---------------|---------------|
| 1 | 04 30 31 032 00 90 | fixing set | 1 | 2 |
| 2 | 09 17 20 120 90 | holder | 1 | 2 |
| 3 | 09 14 10 150 90 | seal | 2 | 2 |
| 4 | 09 27 97 015-00 | rosette | 1 | 10 |
| 5 | 90 11 03 070 00-00 | pipe | 1 | 10 |
| 6 | 09 23 01 075 90 | insert | 1 | 2 |
| 7 | 04 12 05 092 10-00 | shower | 1 | 10 |
| 8 | 90 30 09 069 00 90 | key | 1 | 2 |